

# OUR STUDENTS BY THE NUMBERS



TOTAL NUMBER OF APPLICATIONS  
**41,651**

**7.8%**  
ACCEPTANCE RATE

**1,744** | **3,229**  
TOTAL NUMBER ENROLLED | TOTAL NUMBER ACCEPTED

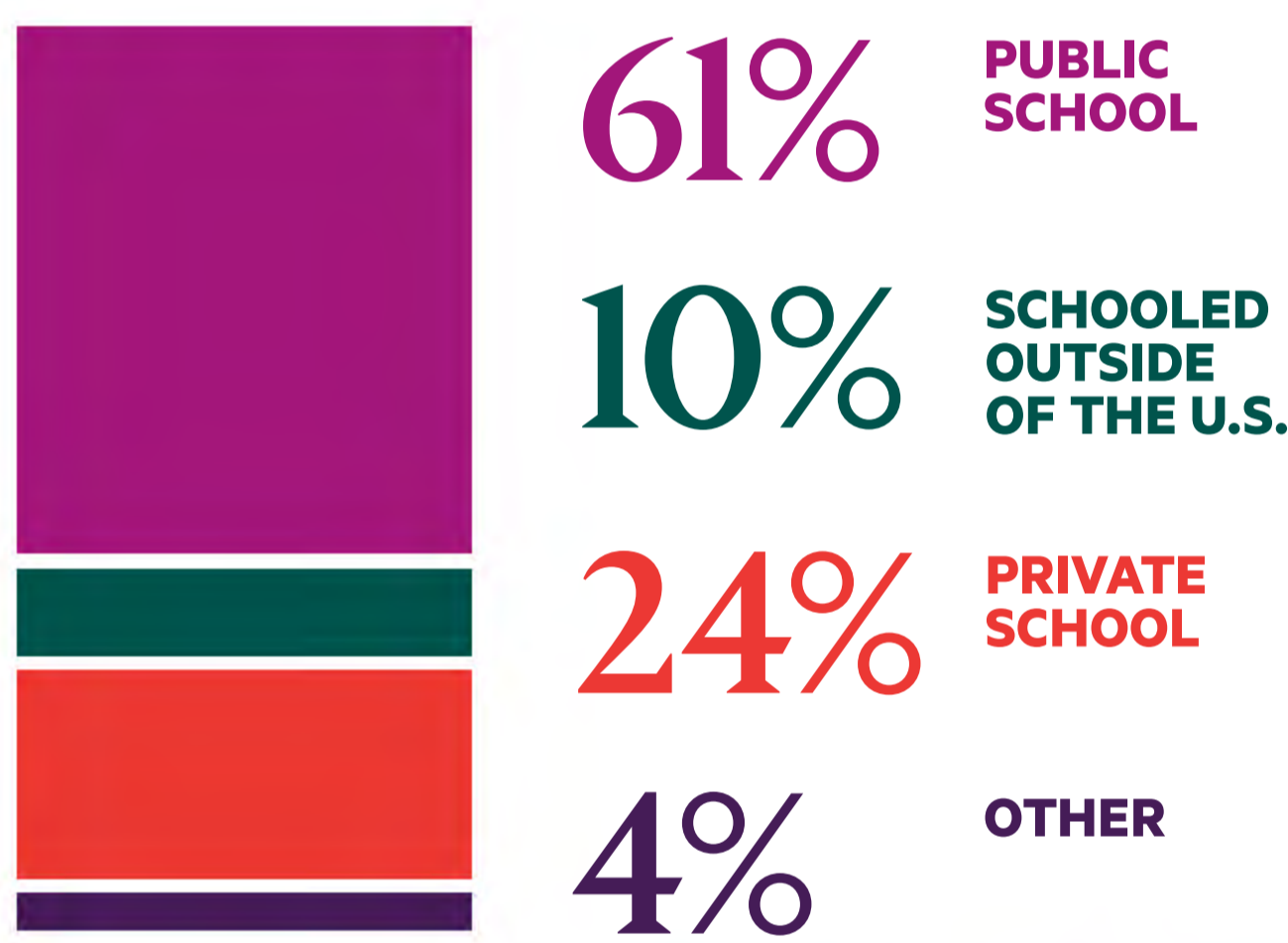
## TEST SCORES

SAT: **1500–1560**

ACT: **33–35**

Middle 50% range for SAT & ACT scores for accepted students

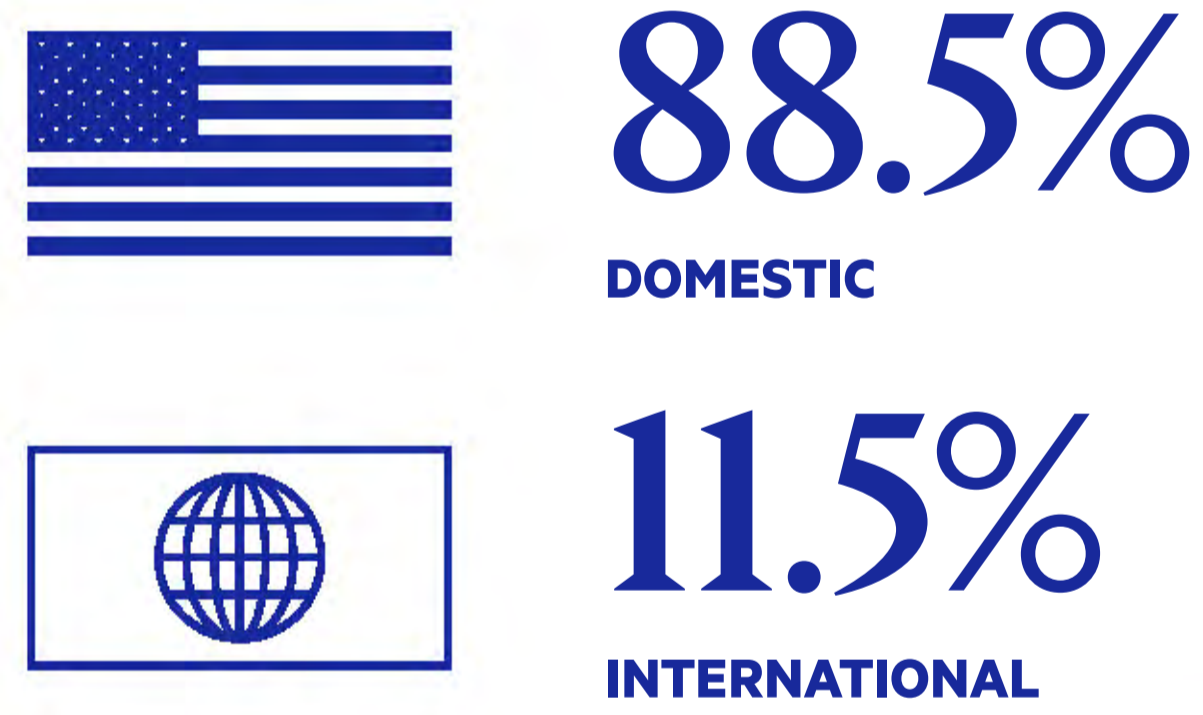
## DEMOGRAPHICS



**18.4%** | **6.4%**  
EARLY DECISION ACCEPTANCE RATE | REGULAR DECISION ACCEPTANCE RATE



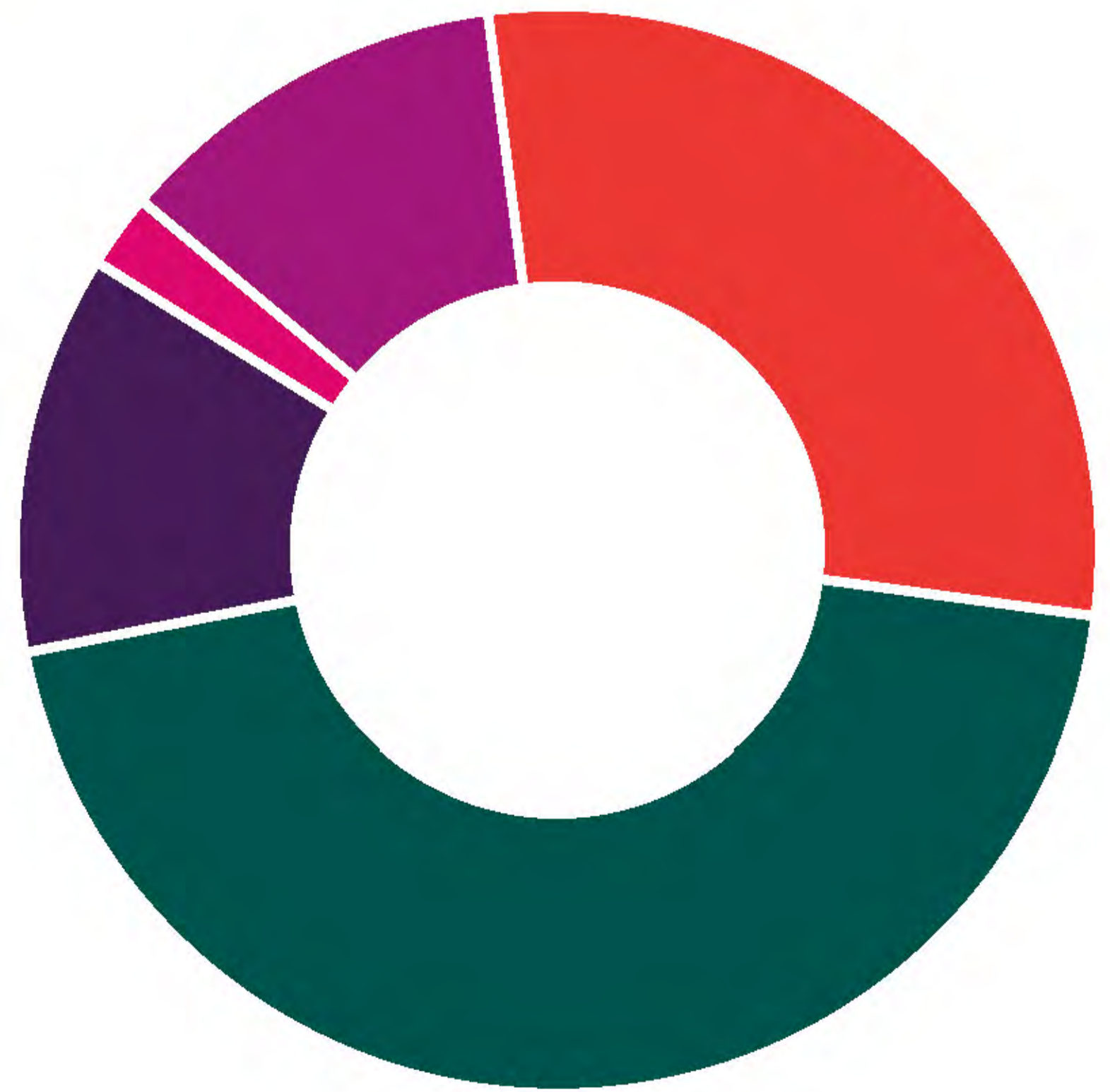
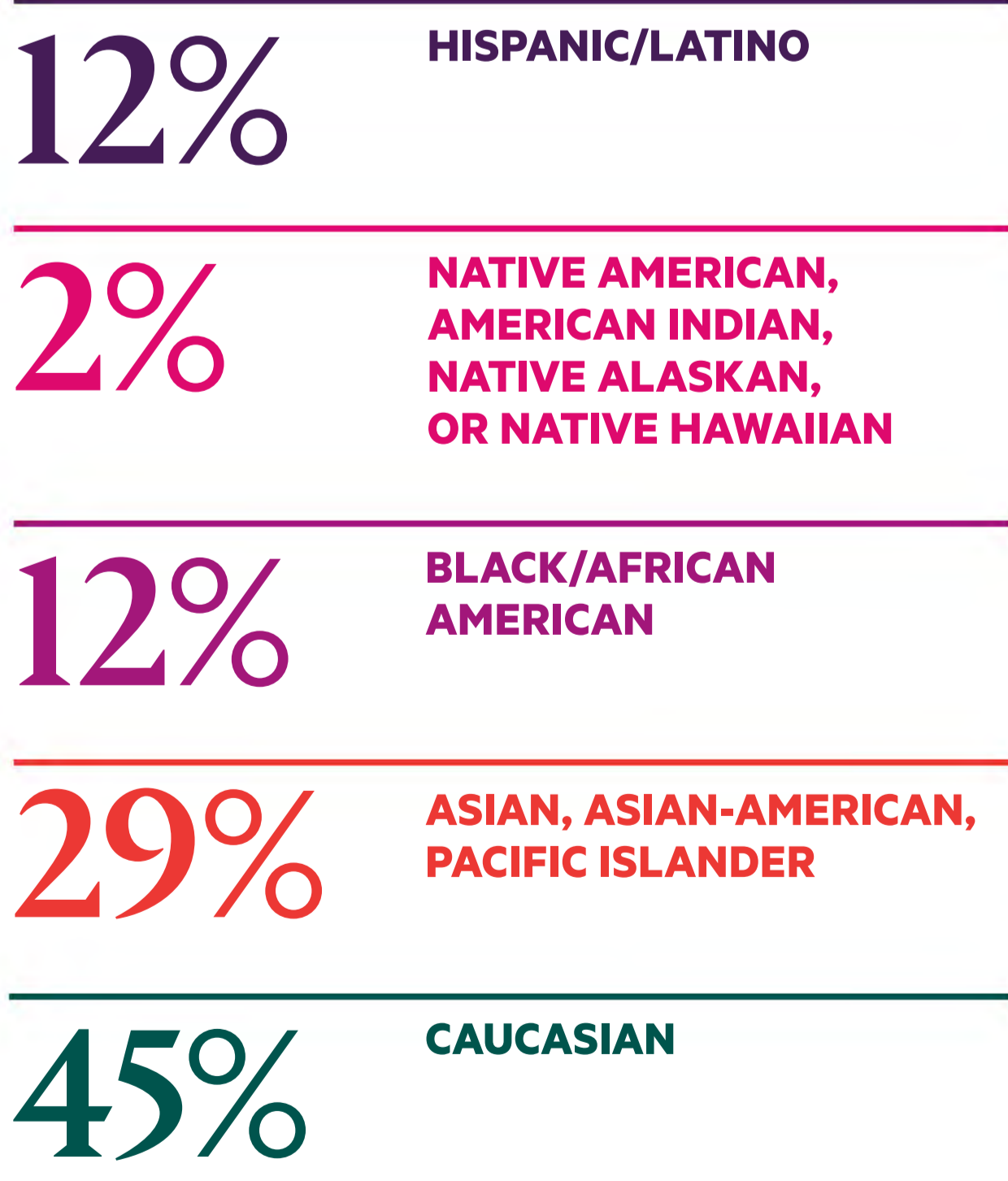
## GEOGRAPHIC DISTRIBUTION



## GENDER

**49%** | **51%**  
FEMALE, FEMALE-IDENTIFYING | MALE, MALE-IDENTIFYING

## DIVERSITY



## ACCESS

**8%** | **50%** | **100%**  
FIRST-GENERATION COLLEGE STUDENT | OF STUDENTS RECEIVE FINANCIAL AID | FINANCIAL AID MET FOR EVERY ADMITTED STUDENT